

Product Data sheet : Hall Effect Current Sensor - HE400T01

Date : 06.03.2011

Rev : 01

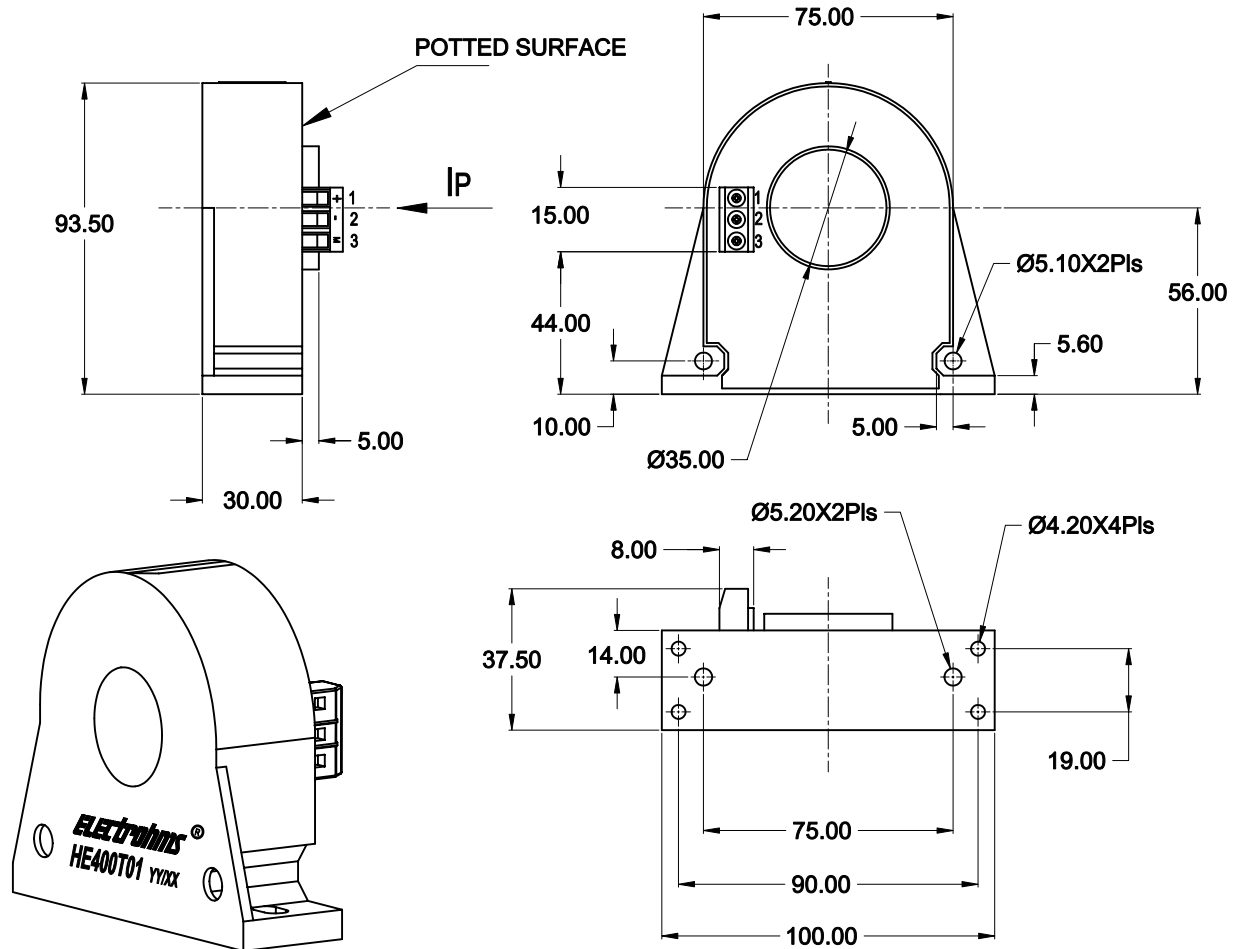
Page 1 of 2

Customer: Standard

Customer's part No.: ---

 RoHS Compliant

● MECHANICAL DIMENSIONS



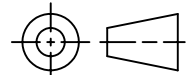
● APPLICATION :

Used for measurement of electric current, AC, DC, Pulsed in electrical & electronic equipment.

● FEATURES :

- Closed loop current sensor.
- Flange mounting type.
- Current output.t
- All relevant materials are UL approved

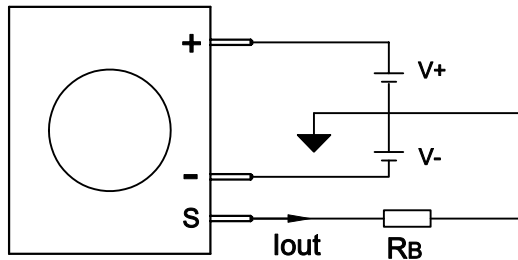
GENERAL TOL.
±0.5 mm



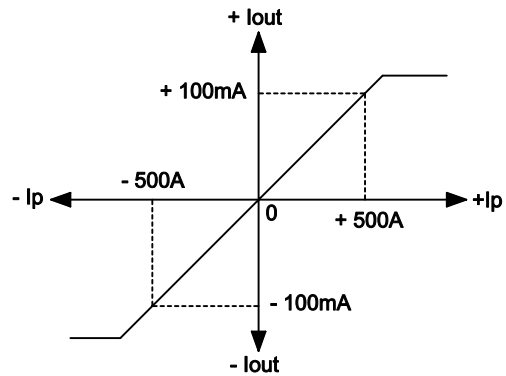
ALL DIMENSIONS
ARE IN 'mm'

SCALE -NTS

● CONNECTIONS DIAGRAM



● INPUT & OUTPUT CHARACTERISTICS



+ Ip Indicates primary current flowing in the direction of the arrow

● SPECIFICATIONS @ 25° C **

PARAMETERS	VALUES	UNITS
Primary Current Nominal (Ipn)	400	Arms
Primary current, range (Ip)	0 to +/-600	A
Burden Resistance (Rb) @ ± 15V, ±500A @ ± 15V, ±800A	0 to 62 0 to 11	Ω
Conversion Ratio (K)	4000 : 1	---
Current output @ Ipn (Iout)	100	mA
Supply Voltage (V+ / V-)	+/- 15 to 18	V
Current consumption @ ±15V (Ic)	28 + Is	mA
Accuracy	+/- 0.7	%
Linearity	≤ 0.1	%FS
Output offset current @ Ip = 0.	< ±0.25	mA
Temperature variation of Iout (-25 to +85°C)	< ±0.5	mA
Response time 90% of Ipn step	< 1.0	µs
Frequency bandwidth @ -3dB (fbw)	DC to 100	kHz
Dielectric strength Pri to Output terminals	6.0	kV
Operating Temperature Range	- 25 to + 85	°C
Weight	308	g

** Specifications subject to change.

Note : ---